

## COMPACT FILTER HEPA



### Specifications

- Single Pleat
- For high air flow applications
- Low pressure drop, less energy consumption
- High quality glass fibre media
- Guaranteed leak-free
- Available in all grades
- Available in all grades
- Optimized velocity distribution

**Filter Class;** H13 - H14

**Media;** High quality glass fibre

**Sealing Compound;** Polyurethane

**Separators;** Hotmelt

**Flammability Class;** K1/F1 for Normal Temp.

**Max. Operating Temperature;** 75°C

**Faceguard;** Available on request

**Max. Final Pressure Drop;** 600 Pa

**Gasket;** EPDM, EPDM Flat continuous and PU Foam

**Frame type;** Galvanized, Alu. and Stainless Steel

High capacity HEPA filters with single pleat protect people, equipment and processes from airborne particulate contamination. This type of filters are used in air ventilation and air conditioning plants requiring high or very high levels of air purity. They are designed for laminar flow units, air handling units and clean room systems.

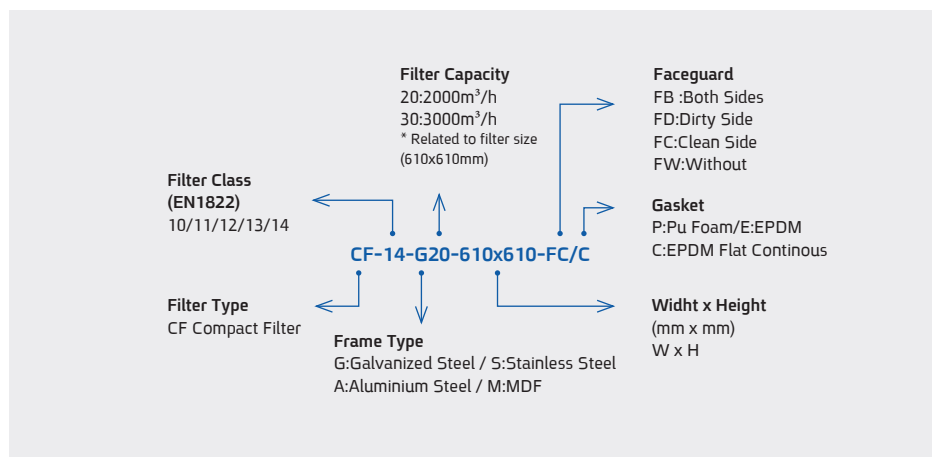
Applications: Industrial processes like microelectronics, medicine, pharma, the food industry, microbiology, chemistry, laboratories, hospital and hospital operating theatres, laminar flow boxes, fan filter units, nuclear energy and nuclear research.

Filtration area and pleat height designed with the optimum value are more important for performance of filters. The filters having high pleat height offer a good solution with lower operating costs and significantly reducing energy consumption.

HEPA and ULPA filters are tested and certified individually according to EN1822 with the advanced technology. We would recommend the higher grades of prefilters to increase the service life of the ceiling filters.

| Model      | Nominal Air Flow for 610x610mm<br>(m <sup>3</sup> /h) | Pleat Height<br>(mm) | Filter Class<br>(EN1822) | Filtration Area for 610x610mm<br>(m <sup>2</sup> ) | Initial Pressure Drop @Nominal Air Flow<br>(Pa) |
|------------|---|----------------------|--------------------------|--|---|
| G20<br>M20 | 2000  | 125                  | H13                      | 18   | 240   |
|            |   |                      | H14                      | 20   | 250   |
| G30<br>M30 | 3000  | 150                  | H13                      | 26   | 250   |
|            |   |                      | H14                      | 30   | 270   |

Other frame depths are available for special applications.





**ATRITECH**

CLEAN AIR IS OUR EXPERTISE

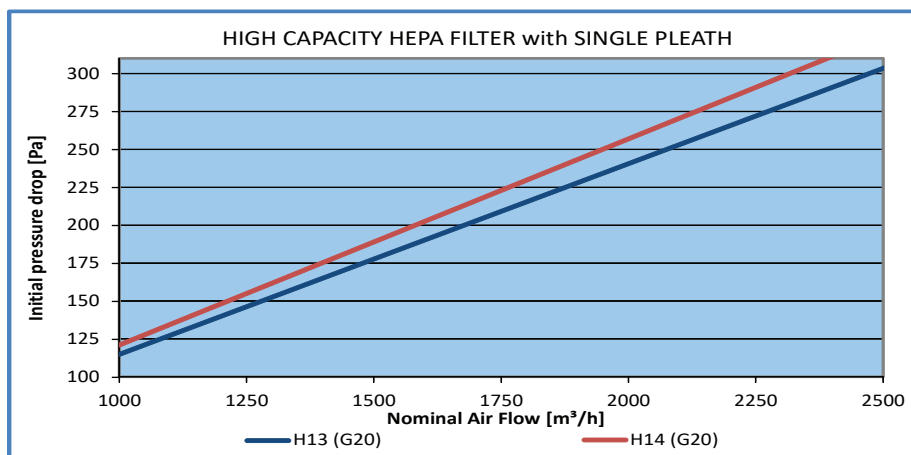
## COMAPCT FILTER HEPA

(G20 - PH;125MM)



| Filter Model            | Filter Class (EN1822) | Dimensions WxHxD (mm) | Filtration Area (m <sup>2</sup> ) | Pleat Height (mm) | Nominal Airflow (m <sup>3</sup> /h) | Initial Pressure Drop (Pa) |
|-------------------------|-----------------------|-----------------------|-----------------------------------|-------------------|-------------------------------------|----------------------------|
| CF-13-G20-305x305-FC/C  | H13                   | 305x305x292           | 4.5                               | 125               | 500                                 | 240                        |
| CF-13-G20-305x610-FC/C  | H13                   | 305x610x292           | 9.0                               | 125               | 1000                                | 240                        |
| CF-13-G20-457x610-FC/C  | H13                   | 457x610x292           | 13.5                              | 125               | 1500                                | 240                        |
| CF-13-G20-610x610-FC/C  | H13                   | 610x610x292           | 18.0                              | 125               | 2000                                | 240                        |
| CF-13-G20-610x762-FC/C  | H13                   | 610x762x292           | 22.5                              | 125               | 2500                                | 240                        |
| CF-13-G20-610x915-FC/C  | H13                   | 610x915x292           | 27.0                              | 125               | 3000                                | 240                        |
| CF-13-G20-610x1220-FC/C | H13                   | 610x1220x292          | 36.0                              | 125               | 4000                                | 240                        |
| CF-14-G20-305x305-FC/C  | H14                   | 305x305x292           | 5.0                               | 125               | 500                                 | 250                        |
| CF-14-G20-305x610-FC/C  | H14                   | 305x610x292           | 10.0                              | 125               | 1000                                | 250                        |
| CF-14-G20-457x610-FC/C  | H14                   | 457x457x292           | 15.0                              | 125               | 1500                                | 250                        |
| CF-14-G20-610x610-FC/C  | H14                   | 610x610x292           | 20.0                              | 125               | 2000                                | 250                        |
| CF-14-G20-610x762-FC/C  | H14                   | 610x762x292           | 25.0                              | 125               | 2500                                | 250                        |
| CF-14-G20-610x915-FC/C  | H14                   | 610x915x292           | 30.0                              | 125               | 3000                                | 250                        |
| CF-14-G20-610x1220-FC/C | H14                   | 610x1220x292          | 40.0                              | 125               | 4000                                | 250                        |

Other dimensions are available on request.



| CF-14-G20-610x610-FC/C |                       |         |
|------------------------|-----------------------|---------|
| Filter Model           | Compact Filter        | CF      |
| Filter Class           | H14 (EN1822)          | 14      |
| Frame Material         | Galvanized            | G       |
| Nominal Capacity*      | 2000m <sup>3</sup> /h | 20      |
| Filter Dimensions      | WxH (mm)              | 610x610 |
| Faceguard Side         | Clean Side            | FC      |
| Gasket                 | EPDM Flat             | C       |

\*According to 610x610 dimensions

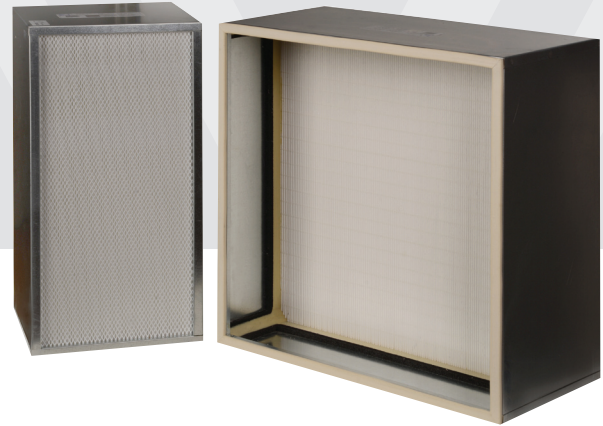


**ATRITECH**

CLEAN AIR IS OUR EXPERTISE

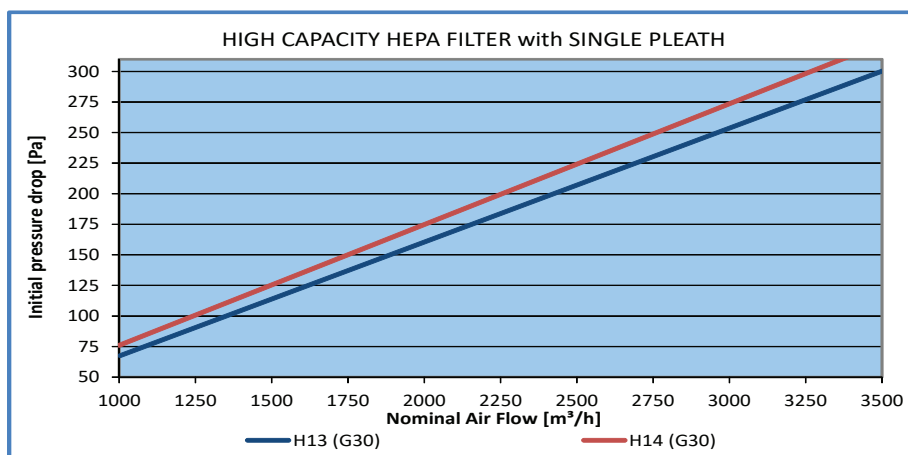
## COMAPCT FILTER HEPA

(G30 - PH;150MM)



| Filter Model            | Filter Class (EN1822) | Dimensions WxHxD (mm) | Filtration Area (m <sup>2</sup> ) | Pleat Height (mm) | Nominal Airflow (m <sup>3</sup> /h) | Initial Pressure Drop (Pa) |
|-------------------------|-----------------------|-----------------------|-----------------------------------|-------------------|-------------------------------------|----------------------------|
| CF-13-G30-305x305-FC/C  | H13                   | 305x305x292           | 6.5                               | 150               | 750                                 | 250                        |
| CF-13-G30-305x610-FC/C  | H13                   | 305x610x292           | 13.0                              | 150               | 1500                                | 250                        |
| CF-13-G30-457x610-FC/C  | H13                   | 457x610x292           | 19.5                              | 150               | 2250                                | 250                        |
| CF-13-G30-610x610-FC/C  | H13                   | 610x610x292           | 26.0                              | 150               | 3000                                | 250                        |
| CF-13-G30-610x762-FC/C  | H13                   | 610x762x292           | 32.5                              | 150               | 3750                                | 250                        |
| CF-13-G30-610x915-FC/C  | H13                   | 610x915x292           | 39.0                              | 150               | 4500                                | 250                        |
| CF-13-G30-610x1220-FC/C | H13                   | 610x1220x292          | 52.0                              | 150               | 6000                                | 250                        |
| CF-14-G30-305x305-FC/C  | H14                   | 305x305x292           | 7.5                               | 150               | 750                                 | 270                        |
| CF-14-G30-305x610-FC/C  | H14                   | 305x610x292           | 15.0                              | 150               | 1500                                | 270                        |
| CF-14-G30-457x610-FC/C  | H14                   | 457x457x292           | 22.5                              | 150               | 2250                                | 270                        |
| CF-14-G30-610x610-FC/C  | H14                   | 610x610x292           | 30.0                              | 150               | 3000                                | 270                        |
| CF-14-G30-610x762-FC/C  | H14                   | 610x762x292           | 37.5                              | 150               | 3750                                | 270                        |
| CF-14-G30-610x915-FC/C  | H14                   | 610x915x292           | 45.0                              | 150               | 4500                                | 270                        |
| CF-14-G30-610x1220-FC/C | H14                   | 610x1220x292          | 60.0                              | 150               | 6000                                | 270                        |

Other dimensions are available on request.



| CF-14-G30-610x610-FC/C |                       |         |
|------------------------|-----------------------|---------|
| Filter Model           | Compact Filter        | CF      |
| Filter Class           | H14 (EN1822)          | 14      |
| Frame Material         | Galvanized            | G       |
| Nominal Capacity*      | 3000m <sup>3</sup> /h | 30      |
| Filter Dimensions      | WxH (mm)              | 610x610 |
| Faceguard Side         | On Clean Side         | FC      |
| Gasket                 | EPDM Flat             | C       |

\*According to 610x610 dimensions