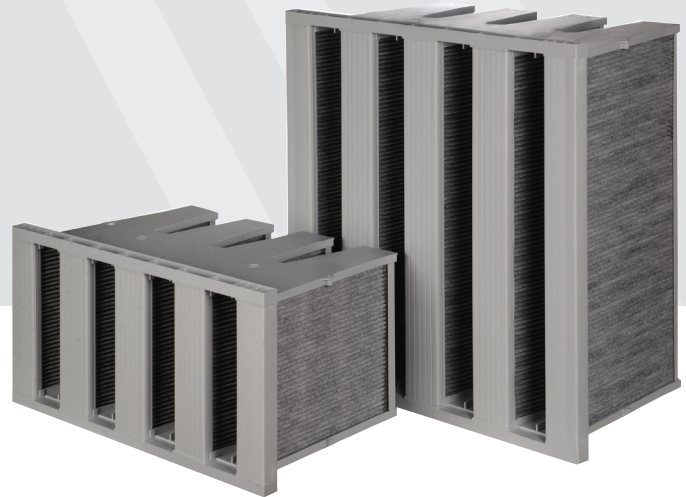




ATRITECH

CLEAN AIR IS OUR EXPERTISE

ACTIVATED CARBON FILTER



Specifications

- High specific absorption efficiency
- Large filter surface and long service life
- High contamination removal capacities
- Easy to handle
- Self support and rigid
- Lightweight plastic frame
- Excellent pressure drop, save energy
- No dust release
- V-cell type, panel type available
- No dust regeneration

Frame; %100 recycled plastic frame (PP)

Media; AC between sythetic layer

Media Weight; 400gsm

Flammability Class; K2/F2 for normal Temp.

Gasket; Without

Final Pressure Drop; 450Pa

Type; High efficiency, activated carbon

Max. Operating Temperature; 50°C

Filters are specially effective against;

- Smog, ozone etc.
- Solvent and thinner vapours from paint and varnish
- Combustion and diesel gases
- Glue, rubber or cleaning agent vapours
- General personnel and hospital odours
- Cooking and decaying food odours

Filter Model	Filter Class	Dimensions WxHxD (mm)	Nominal Airflow (m ³ /h)	Initial Pressure Drop (Pa)	Filtration Area (m ²)	Weight (kg)
RBC-287x592	Activated Carbon	287x592x300	1700	70	4.5	3.8
RBC-402x592	Activated Carbon	402x592x300	2300	70	6	5.2
RBC-490x592	Activated Carbon	490x592x300	2800	70	7.5	6.2
RBC-592x592	Activated Carbon	592x592x300	3400	70	9	7.2

Application Areas

- Public bulding
- Airport
- Workshops
- Spray painting tunnels
- Hospitals
- Food and pharmaceutical industry
- Industrial and civil air conditioning systems